

The European Society of Pathology:

- stará známá či spíše neznámá?

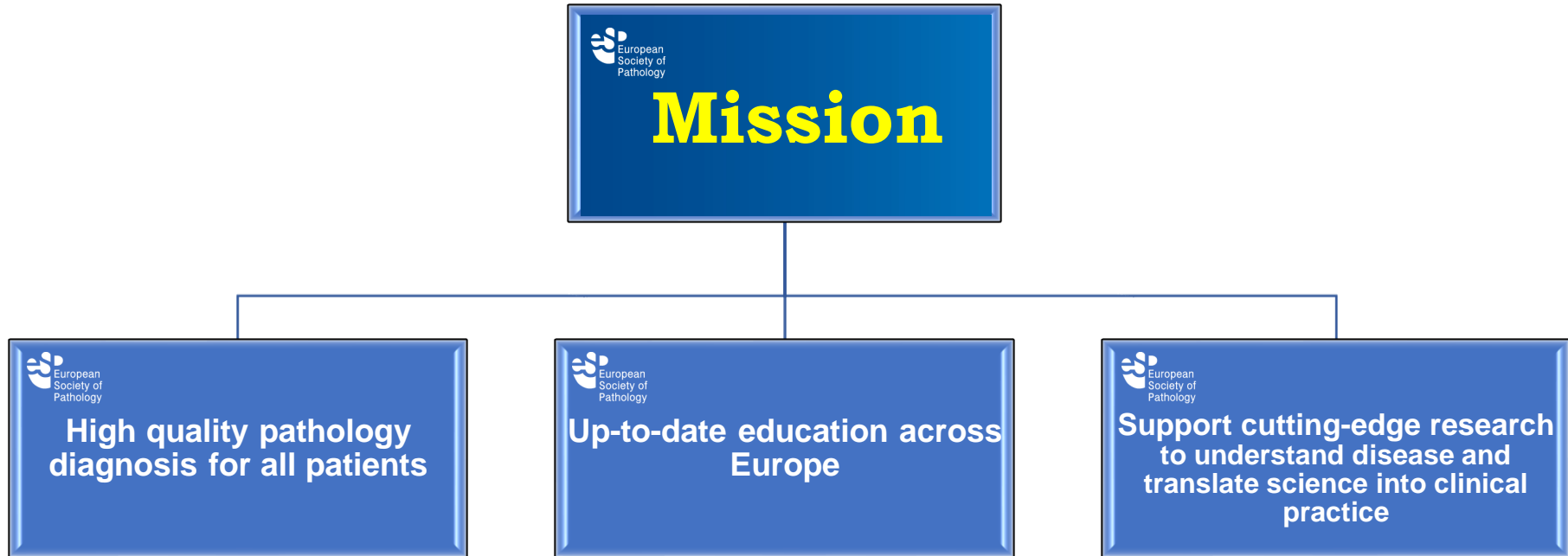
Aleš Ryška
ESP President

- ❖ A 59-year-old Scientific Society devoted to Pathology in Europe
- ❖ A continuing effort across 3 successive generations of pathologists
- ❖ An ever-growing scope of activities involving dedicated individuals and a programme devoted to all European countries



Vision & Mission of ESP

Excellence in pathology for optimal patient care



ESP and National Societies: Natural Connection



The first-time national societies were involved in the activities of the ESP was 1963 in Salzburg



Bidirectional Relationship



1964

115 Members

**13 National
Pathology
Societies**

ESP and National Societies: Natural Connection



The first time national societies were involved in the activities of the ESP was 1963 in Salzburg



Number of Pathologists & ESP Members in Europe

1985	N of Pathologists	N of ESP members	Ratio (%) -ESP Members-Pathologists
Austria	100	26	26
UK	700	31	4
France	900	67	7
Germany (FRG+GDR)	873	100	12
Greece	160	73	46
Italy	500	98	20
Norway	83	36	43
Poland	550	24	4
Sweden	250	29	12
The Netherlands	223	96	43
Belgium	70	55	79
Switzerland	87	33	38
Spain	600	25	4
Hungary	250	46	18
Finland	80	39	49
Denmark	110	26	24
Portugal	63	30	48
Total	5599	834	15

2017	N of Pathologists	N of ESP members	Ratio (%) -ESP Members-Pathologists
Austria	290	44	15
UK	1870	938	50
France	2450	202	8
Germany	1800	105	6
Greece	335	63	19
Italy	1300	90	7
Norway	330	26	8
Poland	580	65	11
Sweden	375	111	30
The Netherlands	575	130	23
Belgium	295	52	18
Switzerland	262	58	22
Spain	1550	119	8
Hungary	330	51	16
Finland	180	28	16
Denmark	250	36	14
Portugal	320	124	39
Total	13177	2242	17

Diversity is an Asset. The ESP by the Numbers

3608

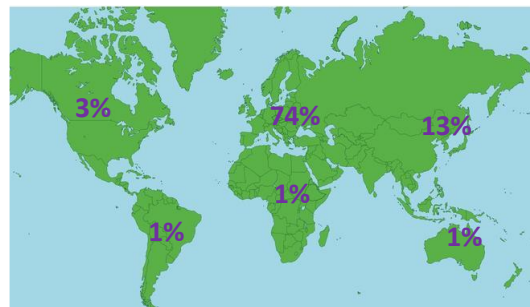
ESP Members

97% are pathologists. **3%** are allied health professionals, representing, molecular biologists, oncologists and many more



90

Countries are represented by members of the ESP



30% **Trainee/**
Young Pathologists

70% **Ordinary**
Members

Diversity is an Asset. The ESP by the Numbers

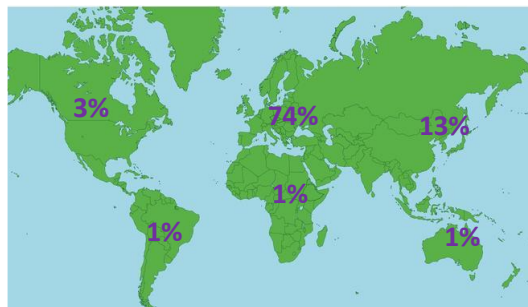


97% are pathologists. **3%** are allied health professionals, representing, molecular biologists, oncologists and many more



90

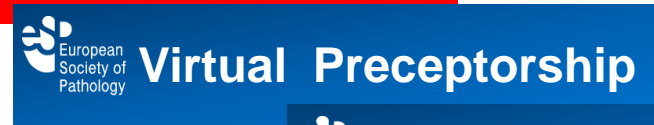
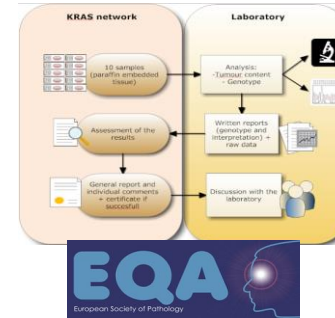
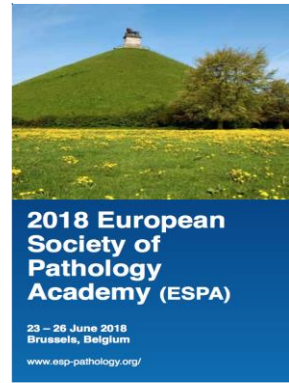
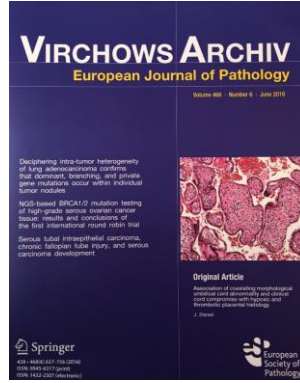
Countries are represented by members of the ESP



30% **Trainee/**
Young Pathologists

70% **Ordinary**
Members

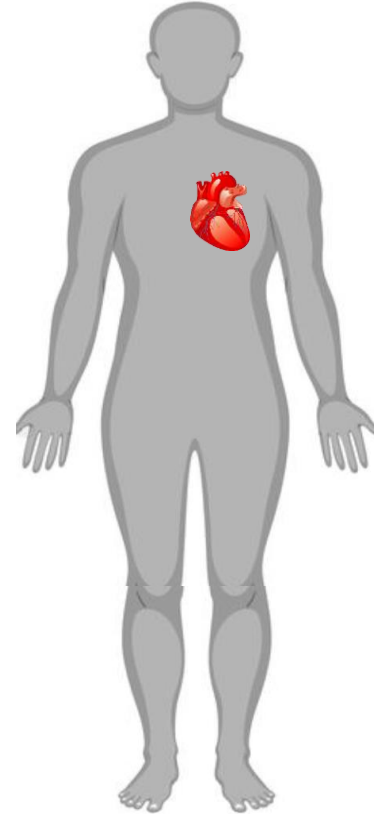
Activities



Executive Committee

President
Secretary
President-Elect
Past-President
Treasurer
Director-General

Council







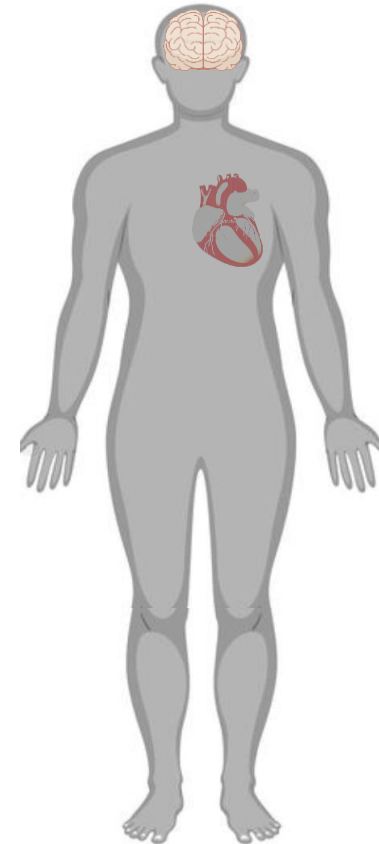
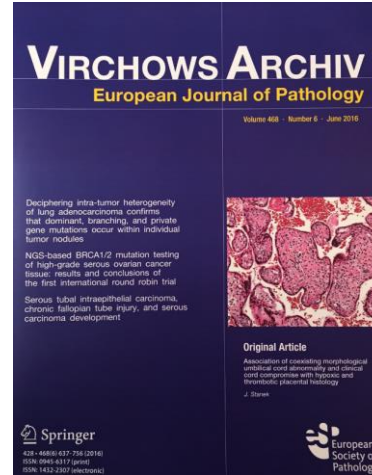
Executive Committee

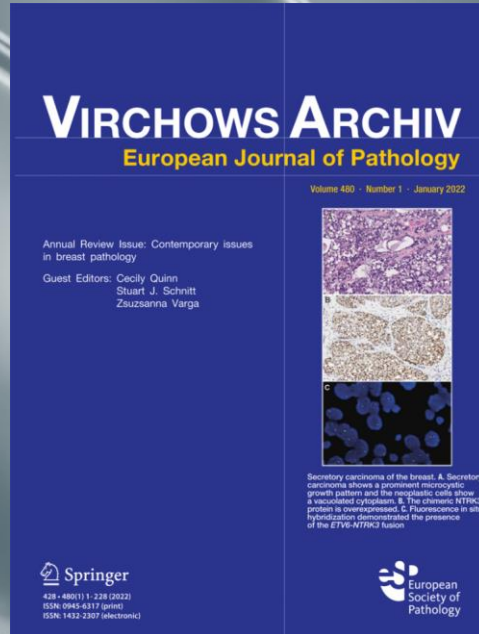
President
Secretary
President-Elect
Past-President
Treasurer
Director General

Council

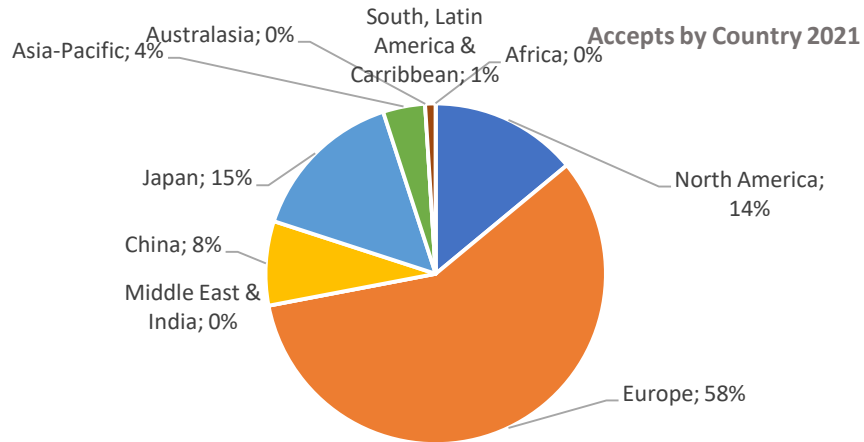
Virchows Archiv

Educational Subcommittee



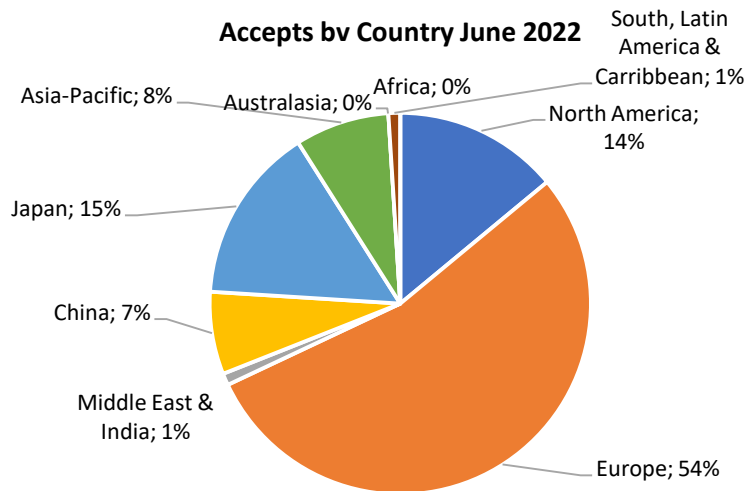


Prof. Abbas Agaimy



North America 2021

United States	12%
Canada	2%

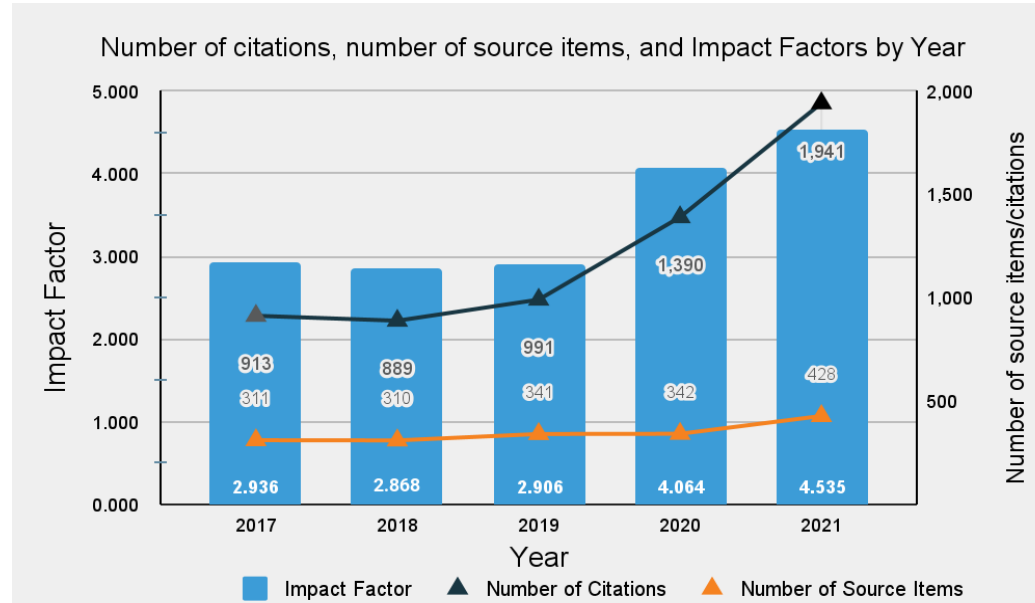


Europe Top 3 2021

Italy	14%
Germany	8%
Netherlands	6%

Impact factor

The JCR Impact Factor trend: Number of Citations and Number of Source Items



Publication Type	Number of articles	Number of Citations	Average Number of Citation to the Article type	Contribution of Citations by article type	Number of 0-Cited articles among article type	% of 0-cited Articles among article type
	by article type	by article type				
Articles	366	1,240	3.39	67%	73	20%
Reviews	65	616	9.48	33%	4	6%
Total	431	1,856			77	

The Body of the ESP

Executive Committee

President
Secretary
President-Elect
Past-President
Treasurer
Director General

Council

Virchows Archiv

Educational Subcommittee

Working Groups

Advisory Board

Trainees Subcommittee




The 20 Working Groups & Affiliated Societies

 Autopsy Pathology Chair: Dr Myriam Metzger	Details	 Breast Pathology Chair: Prof. Zsuzsanna Varga	Details
 Cytopathology Chair: Pr. Philippe Vielh	Details	 Dermatopathology Chair: Professor Eduardo Calonje	Details
 Digestive Diseases Chair: Prof. RM Feakins	Details	 Electron Microscopy Chair: Prof. Giovanna CENACCHI	Details
 Endocrine Pathology Chair: Prof. Jean-Yves Scoazec	Details	 Gynaecological Pathology Chair: Prof. Ben DAVIDSON	Details
 Head and Neck Chair: Prof. Nina Zidar	Details	 History of Pathology Chair: Prof. Rosa Henriques de Gouveia	Details
 IT (Computational) Chair: Prof. Inti ZLOBEC	Details	 Infectious Diseases Chair: Prof. Gregor Gorkiewicz	Details
 Molecular Pathology Chair: Prof. Gerald HOFLER	Details	 Nephropathology Chair: Dr Helmut HOPFER	Details
 Paediatric and Perinatal Pathology Chair: Dr. Isabel COLMENERO	Details	 Pathology in Favor of Developing Countries Chair: Dr. Giulia DE FALCO	Details
 Pulmonary Pathology Chair: Dr. Izidor KERN	Details	 Soft Tissue and Bone Pathology Chair: Pr. Francois Le Loarer	Details
 Thymic and Mediastinal Pathology Chair: Dr. Malgorzata Szolkowska	Details	 Uropathology Chair: Prof. Maurizio Colecchia	Details



The European Congresses of Pathology (ECP)



 European Society of Pathology

34th European Congress of Pathology

The Art of Next Generation Pathology

3–7 September 2022
Congress Center Basel
Switzerland

www.esp-congress.org

 European Society of Pathology

35th European Congress of Pathology

Pathology – a bridge between Science and Medicine

9–13 September 2023
CCD, Dublin, Ireland

www.esp-congress.org

 European Society of Pathology

36th European Congress of Pathology

7–11 September 2024
Florence, Italy

www.esp-congress.org

The 34th ECP by the Numbers

4235

Registrations

100 Countries are represented by the delegates



1. Switzerland	288
2. United Kingdom	264
3. Germany	194
4. Spain	182
5. The Netherlands	163
6. USA	161
7. Italy	140
8. Greece	115
9. Romania	115
10. France	105

**Top
Ten
Countries**



1402 Abstracts submitted

176 Bursaries awarded

26 Industry Symposia

116 Exhibitors



Molecular Pathogenesis of CRC

Genetic landscape of colorectal carcinogenesis

Dr. [Name]

34th European Congress of Pathology

Fig 1. The nine major pathways associated with colorectal carcinogenesis. The nine representative pathways shown in circles, were the pathways. Molecular interactions between the pathways were either strong (green lines) or suppressive (red lines), as well as being strong (black lines) or weak (blue lines).

Dr. [Name]

Dr. [Name]

Dr. [Name]

34th European Congress of Pathology

The 4th of the European Meeting

10-12 September 2018





Membership Benefits*



- €50 annual membership fee, which includes the online version of Virtuoso Archiv
- €80 annual membership fee, which includes also the paper version of Virtuoso Archiv
- Access to the electronic version of the Journal of Hematopathology
- No membership fee for residents (trainees) until the end of residency
- Discount on registration fees for the annual congresses of the ESP
- Access to the ESP Newsletter
- Access to free education materials
- Access to the ESP Research Programmes & Fellowships

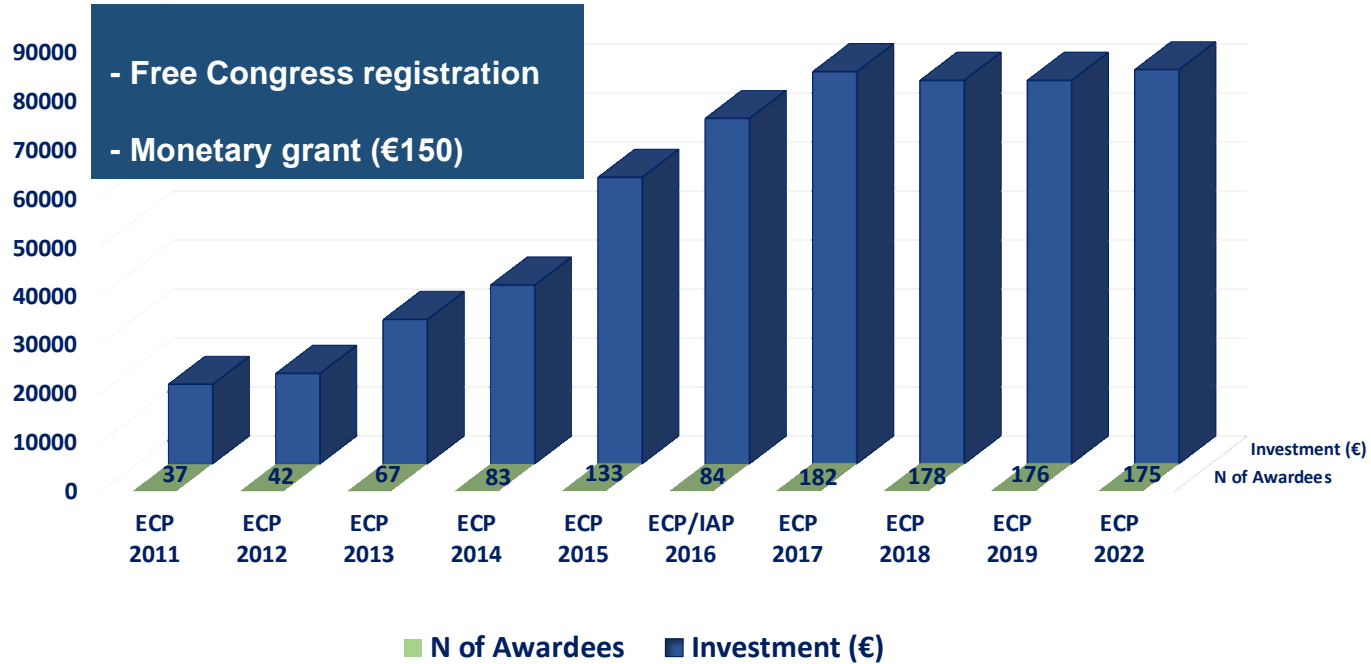
etherAI

POBUHL

- Congress Bursaries
- ESP Giordano Fellowships
- ESP Academy
- EScoP Courses
- Virtual Preceptorships
- Pathology Progress Test

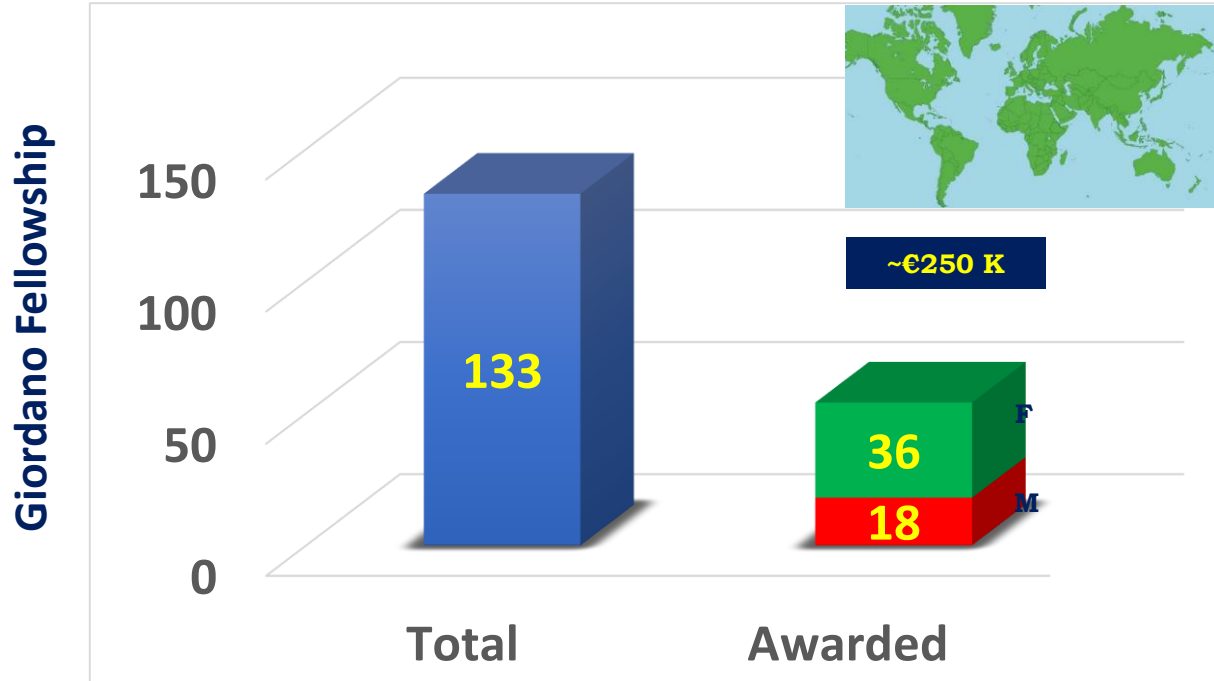
ESP Congress Bursaries

N. of Bursary Awardees (2011-2022)



Giordano Fellowship Awardees (2015-2022)

Success rate 41% (2015-2022)



Available Training Centers

- ESP Advanced training center for Colorectal cancer and Precursor lesions
Nijmegen, The Netherlands
- ESP Advanced training center for cancer research and Breast pathology
Candiolo, Italy
- ESP Advanced training center for selected areas in Lung pathology
Graz, Austria
- ESP Advanced training center for Bone and Soft Tissue pathology
Leiden, The Netherlands
- ESP Advanced training center for Hematopathology
Barcelona, Spain
- ESP Advanced training center for Hematopathology
Nijmegen, The Netherlands
- ESP Advanced training center for Liver pathology
Basel, Switzerland
- ESP Advanced training center for Breast pathology
Barcelona, Spain
- ESP Advanced training center for Nephropathology
Basel, Switzerland

ESP Giordano Fellowship & Advanced Training Centres

- ESP Advanced training center for Breast pathology
Falun, Sweden
- ESP Advanced training center for Paediatric and Perinatal pathology
Sheffield, United Kingdom
- ESP Advanced training center for Gastrointestinal pathology
Graz, Austria
- ESP Advanced training center for Nephropathology
Erlangen, Germany
- ESP Advanced training center for GU Pathology
Plzen, Czech Republic
- ESP Advanced training center for Endocrine Pathology
Porto, Portugal
- ESP Advanced training center for Urological Pathology
Erlangen, Germany
- ESP Advanced training center for Breast and Gynaecological Pathology
Barcelona, Spain
- ESP Advanced training center in the area of Liver Pathology
Heidelberg, Germany
- ESP Advanced training center in the area of Molecular Pathology
Heidelberg, Germany

ESP Giordano Fellowship & Advanced Training Centres

- ESP Advanced Training Centre for Ophthalmic Pathology
Liverpool, United Kingdom
- ESP Advanced Training Centre for Thyroid and Parathyroid Tumours
Lausanne, Switzerland
- ESP Advanced Training Centre for Molecular Pathology with an emphasis on liquid biopsy
Nice, France
- ESP Advanced Training Centre for Breast Pathology
Barcelona, Spain
- ESP Advanced Training Centre for Haematopathology
Cambridge, United Kingdom

.....and growing

Giordano Fellowship Awardees (Edition 2017)

n=13

Names	Country of residence	Sub-specialty
Bence Kővári	Hungary	Digestive Diseases (GI Pathology)
Carlos Marques Pontinha	Portugal	Paediatric & Perinatal
Jelena Vjestica	Serbia	Uro pathology
Klára Éles	Hungary	Bone and Soft Tissue Pathology
Marina Degtiareva	Belarus	Digestive Diseases (GI Pathology)
Martina Botic	Serbia	Molecular Pathology
Poulios Christos	Greece	Endocrine Pathology
Oana Cristina Voinea	Romania	Breast Pathology
Rui Caetano Oliveira	Portugal	Digestive Diseases (Liver Pathology)
Samir Adullazade	Turkey	Digestive Diseases (Liver Pathology)
Susana Guimarães	Portugal	Paediatric & Perinatal
Velibor Puzovic	Croatia	Breast Pathology
Wael Al-Zoughbi	Austria	Molecular Pathology

Giordano Fellowship Awardees (Edition 2018)


n=8

Name	Country of residence	Sub-specialty
Lucian George Eftimie	Romania	Endocrine Pathology
Rina Limani	Kosovo	Uropathology
Anca Evsei	Romania	Breast Pathology
Aoife Canney	Ireland	Nephropathology
Martyna Trzeszcz	Poland	Paediatric & Perinatal
Adelina Birceanu	Romania	Uropathology
Ana Costa Braga	Portugal	Paediatric & Perinatal
Georgian Halcu	Romania	Haematopathology

Edition-2019 (N=15)

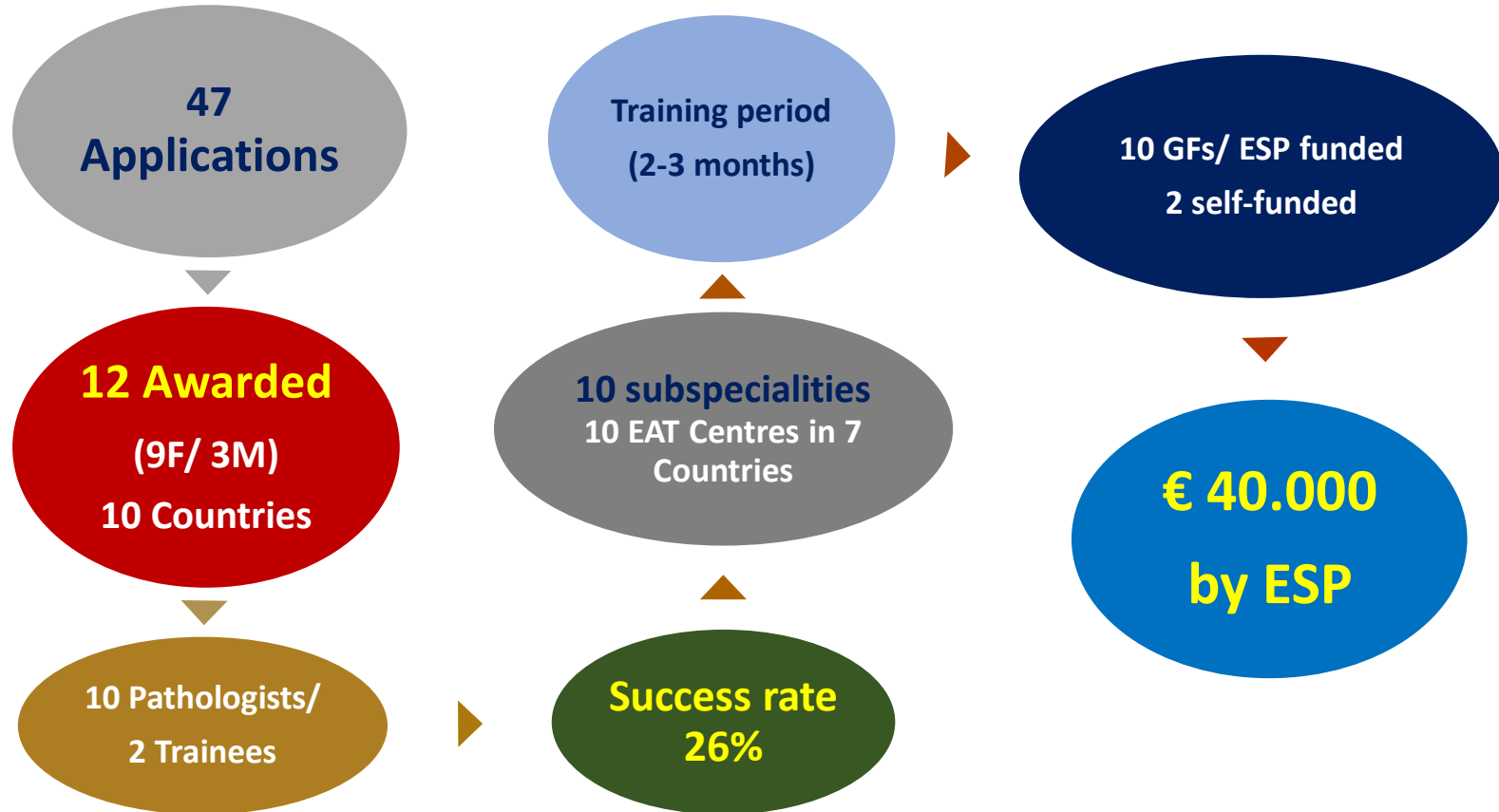
Names	Country of residence	Sub-Specialty
Fatima Jukovic-Bihorac	Bosnia & Herzegovina	Uro pathology
Panche Zdravkovski	F.Y. Republic of Macedonia	Bone and Soft Tissue
Alina-Roxana Gouloumis	Greece	Gynaecological Pathology
Judit Bedekovics	Hungary	Haematopathology
Levente Kuthi	Hungary	Uro pathology
Loay Emad Abudalu	Jordan	Paediatric & Perinatal
Ahmad Altaieb	Kuwait	Breast Pathology
Ana Isabel Pereira Marques	Portugal	Breast Pathology
Joana Almeida Tavares	Portugal	Paediatric & Perinatal
Esperança Ussene	Portugal	Breast Pathology
Leila Ali	Romania	Uro pathology
Patricia-Irina Stinga	Romania	Bone and Soft Tissue
Oana Beatrice Popescu	Spain	Uro pathology
Evsen Apaydin Arikan	Turkey	Haematopathology
Gonca Ozgun	Turkey	Digestive Diseases (Liver)

Edition-2020 (N=23)

Name	Country of Residency	Sub-Specialty	Funded
Alexandra Rosulescu	Romania	Breast Pathology	 European Society of Pathology
Mariia Yanovytska	Ukraine	Breast Pathology	
Caterina Fattorini	Italy	Breast Pathology	
Angelina Stefanova Karamfilova	Bulgaria	Dermatopathology	
Roman Moskalenko	Ukraine	Endocrine Pathology	
Ilze Fridrihsone	Latvia	Endocrine Pathology	
Slawomir Pakulo	Poland	Haematopathology	
Jelena Ilic Sabo	Serbia	Haematopathology	
Tanja Lacic	Serbia	Haematopathology	
Mariam Gachechiladze	Czech Republic	Molecular Pathology	
Ayse Mine Önenerk	Turkey	Molecular Pathology	
Subasri Armon	Malaysia	Molecular Pathology	
Ana Catarina Pereira de Araujo	Portugal	Paediatric & Perinatal	
Oana Neagu	Romania	Paediatric & Perinatal	
Daniela Xhemalaj	Albania	Pulmonary Pathology	
Tamas Zambori	Hungary	Pulmonary Pathology	
Teona Muzashvili	Georgia	Uropathology	
Selim Komina	Republic of North Macedonia	Uropathology	
Tamas Strausz	Hungary	Digestive Diseases (GI)	
Hüseyin Karatay	Turkey	Digestive Diseases (GI)	
Jasmina Redzepagic	Bosnia & Herzegovina	Digestive Diseases (GI)	
Kseniya Ruksha	Belarus	Digestive Diseases (GI)	
Burcin Subasi Girgin	Turkey	Digestive Diseases (GI)	

Edition-2022 (N=10)

Name	Country of residence	ESP-ATC and sub-specialty
Zeynep Betul Erdem	Turkey	Leiden, Bone and Soft tissue Pathology
Irene Gullo	Portugal	Heidelberg, Liver Pathology
Benedek Gyöngyösi	Hungary	Candiolo, Cancer research and breast Pathology
Esra Karakuş	Turkey	Sheffield, Paediatric and Perinatal Pathology
Adoke Kasimu	Nigeria	Nijmegen, Colorectal cancer and Precursor lesions
Nuno Jorge Lamas	Portugal	Liverpool, Ophthalmic Pathology
Federica Pezzuto	Italy	Nice, Molecular Pathology with an emphasis on liquid biopsy
Sofia-Eleni Tzorakoleftheraki	Greece	Padova, Pulmonary Pathology
Maryna Slisarenko	Ukraine	Basel, Nephropathology
Jiri Soukup	Czech Republic	Leiden, Bone and Soft tissue Pathology



Training future generations of pathologists

- Much of the current training activity is dedicated to new generations of diagnosticians
- Efforts are needed to identify new academic leaders and to develop activities to foster such talent

Establishment of the ESP Academy

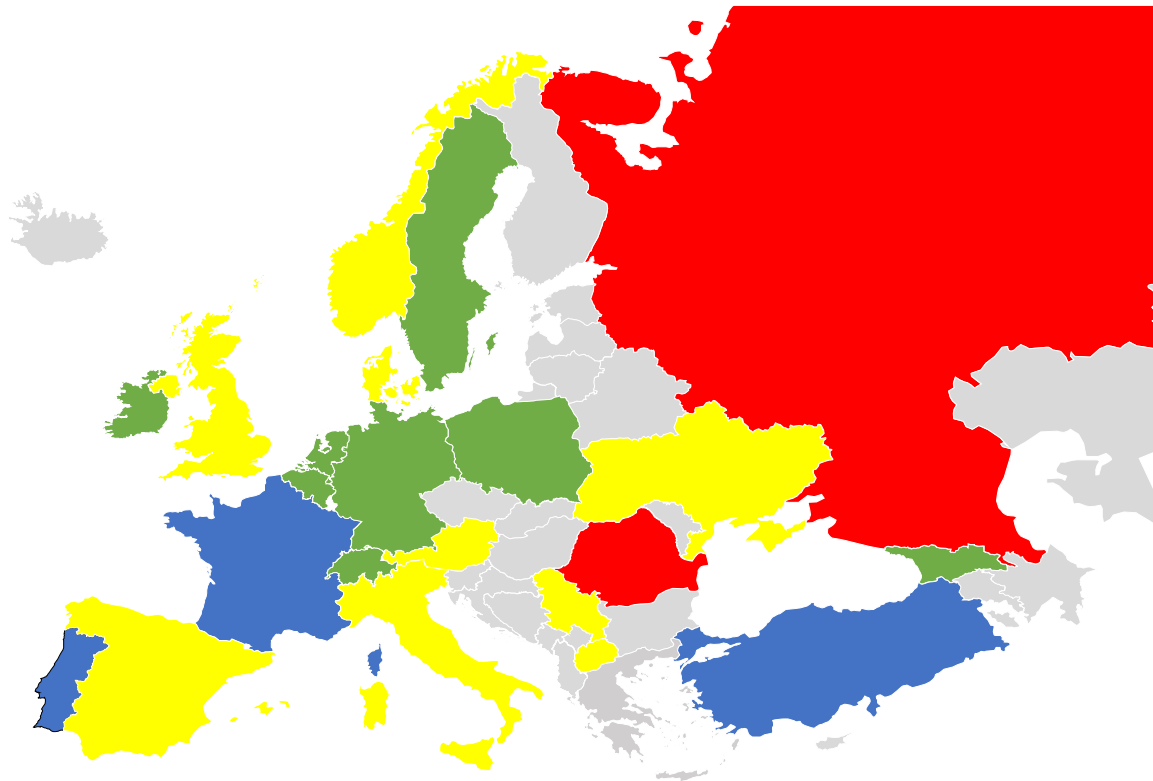
- **Intensive workshop** for young pathologists with or working towards a postgraduate research degree (MSc, PhD)
- Advance scientific career of young pathologists & identify future leaders in the field
- Motivate for science career and engagement in ESP
- Strengthen science in ESP & foster scientific interaction



ESPA 2022 Applications

ESPA 2022
applicants per
country
Red: 5 or 6
Blue: 3 or 4
Yellow: 2
Green: 1
Grey: 0

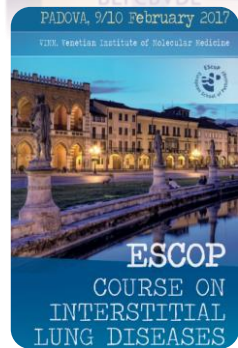
Also: Israel,
Philippines,
Singapore and
Nigeria





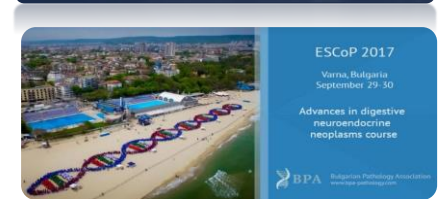
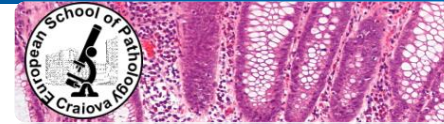
The European School of Pathology (EScoP) was founded in the early 1990's to assume **responsibility in the field of postgraduate education in pathology**

- Courses are practice oriented -practical work on microscopic images
- Senior trainee/junior consultant level
- Up to 50 participants to favor interaction
- Faculty is limited in number (4 lecturers for a 3-day course)
- Programs are built in half-day topic oriented modules
- Self-evaluation



Updates in:

Head and Neck, Pancreas, Bile Duct System & Liver, Breast, Thyroid, Gastro-Intestinal, Soft Tissue Tumours, Respiratory, Urinary and Male Genital Tracts, Female Genital Tract, Gynaecological, Interstitial lung diseases, Nephropathology





Pathology Progress Test

November 2022



- Close collaboration with the UEMS Board of Pathology
- **Purely formative: a tool for self-assessment**
- The results are kept anonymous
- Primarily for trainees at the end of a residency program (but any pathologist is welcome to participate)
- 120 questions: text, still images, virtual slides
- Diagnostic & molecular pathology, also mechanism of disease
- Immediate test score
- After closure of the test, participants receive a list of the correct answers as feed-back

Pathology progress test 2022

Results for the top-15 countries with most participants

Country	Success Rate (%)	Number Members	Number of Non-Members	total
Italy	61,79	29	140	169
Spain	65,63	32	24	56
United Kingdom of Great Britain and Northern Ireland	67,1	21	12	33
Romania	63,31	27	4	31
Portugal	71,72	24	6	30
Croatia	68,84	12	16	28
Netherlands	62,75	9	15	24
Turkey	67,13	10	10	20
Greece	65,89	12	6	18
Belgium	63,24	8	9	17
Germany	65,54	7	9	16
France	58,21	3	11	14
Ukraine	61,67	3	11	14
Hungary	62,44	6	7	13
Iraq	70,19	2	11	13

Recently Developed VP

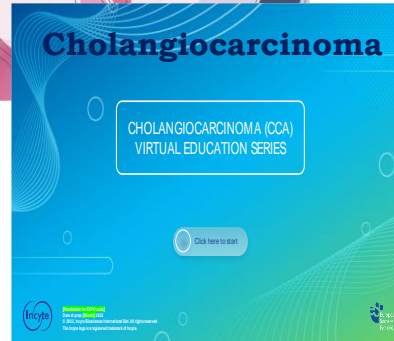
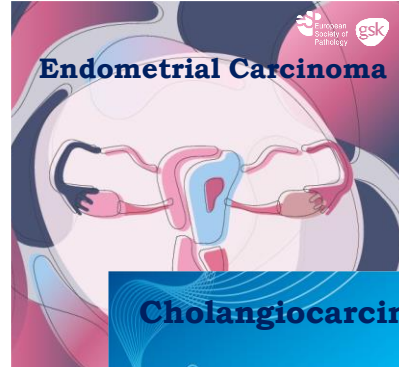


The screenshot displays the 'PROSTATE CANCER VIRTUAL EDUCATION SERIES' interface. It features a dark blue header with the ESP logo and 'In collaboration with MSD AstraZeneca'. The main content area is divided into several sections:

- Theory module** by Sven Pernér
- OVARIAN CANCER VIRTUAL EDUCATION SERIES** (partially visible)
- Theory module** by Xavier Matias-Guiu
- Tissue testing module** by Gerald Hüfer
- Coming soon** sections for HRD testing module, Germline testing module, and Best practice module, all by TBC.

Each module entry includes a 'Resources' section with icons for downloading the presentation, watching a video, and self-assessment.

Under Developed VP



In the Pipe-Line

NSCLC

Breast Carcinoma

The Advisory Board of ESP

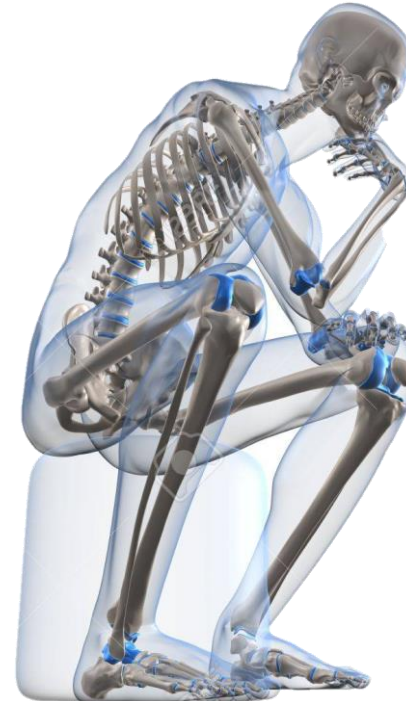
ESP closely interacts with **National Societies** in Europe. This has been formalized in **the Advisory Board (AB)**, which is composed of one representative from every National Society of Pathology affiliated with ESP.

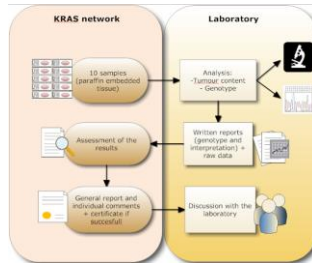
 Austria	 FYROM	 Italy SIAPEC-IAP	 Slovenia Slovenian Society of Pathology
 Belgium Belgian Society of Pathology	 Germany	 Norway Den Norske Patologforening DNP	 Spain Sociedad Española de Anatomía Patológica
 Bulgaria	 Great Britain and Northern Ireland Pathological Society of Great Britain and Ireland	 Poland	 Sweden Swedish Society of Pathology
 Croatia Croatian Society of Pathology & Forensic Medicine	 Greece Hellenic Society of Pathology (H.S.P.)	 Portugal Sociedade Portuguesa de Anatomia Patológica	 Switzerland Swiss Society of Pathology
 Czech Republic Czech Society of Pathology	 Hungary Society of Hungarian Pathologists	 Romania RD-IAP	 The Netherlands
 Denmark	 Iceland	 Russia	 Turkey Turkish Pathology Society
 Finland	 Ireland Faculty of Pathology of the RCPI	 Serbia Association of Pathologists and Cytologists	 Ukraine
 France French Society of Pathology		 Slovakia	

The Body of the ESP

The ESP-affiliated **National Societies** are the **ESP's bones**

The ESP networks between national pathology societies in Europe, linking with EU bodies in close coordination with UEMS and other scientific organizations





since 2009

Current Programs

Lung EQA Scheme

- ALK Fusions NSCLC (ISH)
- DRT ALK Fusions NSCLC (ISH)
- ALK NSCLC (IHC)
- ROS1 Fusions NSCLC (ISH)
- DRT ROS1 Fusions NSCLC (ISH)
- ROS1 Fusions NSCLC (IHC)
- Mutations NSCLC: *EGFR, KRAS, BRAF* (MolPath Scheme)
- Fusions NSCLC: *ALK, ROS1, RET* (MolPath Scheme)

PDL-1 EQA Scheme

- TNBC
- NSCLC
- UC
- HNSCC

Colon EQA Scheme

ESP membership benefits

- **€ 50 annual fee** with online version of Virchows Archiv
- € 80 annual fee with paper version of Virchows Archiv
- 3- or 5-year membership with fee reduction
- **No membership fee for residents during their training**
- Discount rates for registration to annual congress
- Extended access to congress material
- Access to bursaries
- Free access to Educational Platform, courses and fellowships
- Free access to Progress Test
- Access to Masterclasses

To learn more about the ESP and the
membership benefits visit



www.esp-pathology.org



**Save
the date**



35th European Congress of Pathology

*Pathology – a bridge between Science
and Medicine*

9 – 13 September 2023
CCD, Dublin | Ireland



**We ♥
European Society Of
Pathology**

TIME